

Cost-effective
PC alternative

Perfect for UNIX®
environments that require
TCP/IP connectivity

Color VGA compatibility

Built-in multiple-port
print server



ADVANCED NETWORK TERMINAL

The NetTerminal achieves unparalleled performance and connectivity using standard Ethernet protocols over standard thin or twisted-pair Ethernet cabling.

Based on a high-performance 32-bit TCP/IP protocol stack and multitasking kernel, NetTerminal replaces ASCII/ANSI terminals and PCs running terminal emulation software.

MULTISESSION WITH UNMATCHED PERFORMANCE AND USER PRODUCTIVITY

Twelve-color TELNET sessions are provided over 10Mbps Ethernet or local SLIP via serial ports. Users can run applications concurrently on multiple hosts accessible to existing TCP/IP networks.

BUILT-IN TCP/IP PRINT SERVER

The NetTerminal can be configured as a print server for network-wide printing using two local RS-232 serial ports and a PC-compatible parallel port.

PLUG-AND-PLAY INSTALLATION

Simply connect NetTerminal to existing TCP/IP networks using the host table or DNS for large corporate networks. Sessions are individually configured with a user-friendly administration interface. No added setup on host is required.

FIELD UPGRADABLE

Using the latest Flash ROM technology, the NetTerminal firmware is field upgradable over the network, allowing it to evolve with user needs. Multiple feature sets are available to address specific requirements.

SELF-CONTAINED

All configuration information is stored locally, eliminating the need for complex boot server software installation.

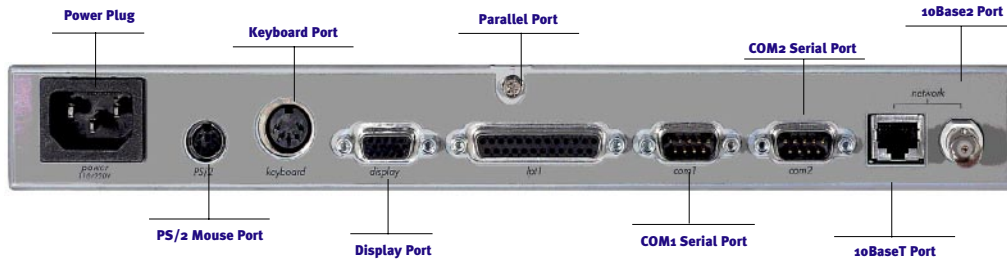
POINT-OF-SALE ENABLED

The NetTerminal's serial and parallel ports are network transparent and can be accessed as local UNIX tty devices from the host, a requirement for many POS applications.

COMPACT AND RELIABLE

The NetTerminal is a diskless, compact and ergonomic low-profile package which provides connections for a VGA monitor, keyboard, system printer, two serial devices and an Ethernet network. With no moving parts, it is both reliable and durable.

REAR PORT LAYOUT



SPECIFICATIONS

MODELS 100 & 200 STANDARD FEATURES

BASE MEMORY

1MB RAM standard

MEMORY EXPANSION

4 SIMM sockets for additional RAM

FLASH MEMORY

512KB used to store firmware and configuration database

KEYBOARD PORT

PC AT and PS/2-style DIN connectors. Operates with any AT-compatible keyboard

DISPLAY (VGA) PORT

Color VGA compatible

DISPLAY FEATURES

Flicker-free 70Hz refresh rate, 25 or 43 display lines and/or bottom status lines, 80 or 132 columns, selectable scrolling region, programmable tab stops and screen saver, auto login, auto connect

ETHERNET

16-bit bus mastering LAN co-processor. Supports IEEE 802.3 and Ethernet standards using 10Base2 or 10BaseT interfaces

SERIAL I/O

Dual high-performance asynchronous UARTs up to 115K baud. PC compatible. RS-232C compliant DB-9 connectors

PARALLEL I/O

1 Centronics/IBMPC compatible with DB-25 connector

CLOCK/CALENDAR

Battery backup

LEDS

Power status indicator LED
Network activity indicator LED

CERTIFICATIONS

UL 1950; CSA Standard 22.2, No 950; FCC Class A, TUV/GS

PHYSICAL SPECIFICATIONS

Height: 1.75" 44.5 mm
Width: 12" 305.3 mm
Depth: 12.75" 324.4 mm
Ship wt.: 6.7 lb. 3.1 kg.

ENVIRONMENTAL

Operating Environment

- Relative humidity: 20% to 80% non-condensing

- Temperature: 50° to 104° F (10° to 40° C)

- Maximum operating altitude: 9,843 feet (3,000 meters)

Storage Environment

- Temperature: 14° to 120° F (-10° to 50° C)

- Maximum storage altitude: 40,000 feet (12,192 meters)

NEW YORK

100 Marcus Boulevard
Hauppauge, NY 11788-3762
516.342.7400
800.231.5445
FAX 516.342.7378
<http://www.boundless.com>

AUSTIN

Echelon IV, Suite 200
9430 Research Boulevard
Austin, TX 78759-6543
512.349.5800
FAX 512.346.7062

NETTERMINAL FIRMWARE

MODEL 100

PROTOCOLS SUPPORTED
TCP/IP, ARP, UDP, TELNET, RCMD, LPD, DNS

SNMP option

SESSIONS

12 full-screen TELNET sessions can be simultaneously active

EMULATIONS

SCO® console, ANSI, AT386, WY-50, WY-60, VT320, VT220, VT100, Viewpoint A2

PRINT SERVER

LPD or RCMD over TCP/IP

LANGUAGES

U.S. English, U.K. English, German, French, Spanish and Italian

UPGRADABILITY

Field upgradable to enhanced models via serial port or TCP/IP network

COMPATIBILITY

SCO, UNIX V.4, Unixware, Xenix, ODT R3, Open Server R5, AIX®, HP UX, SunSoft and many other UNIX operating systems

MODEL 200

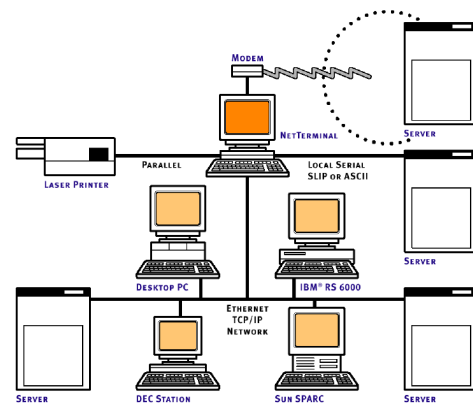
Contains all the features of the NetTerminal Model 100 plus the capabilities of a high-performance terminal server. A total of two serial terminals can be connected to a TCP/IP Ethernet network

EUROPE

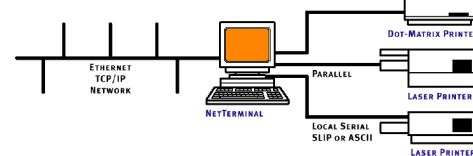
Den Bommel 2
4194 TZ Meteren
The Netherlands
+31(0)345 56 56 56
FAX +31(0)345 56 56 57

NETTERMINAL CONFIGURATIONS

THE NETTERMINAL-100 IN AN ENTERPRISE NETWORK



THE NETTERMINAL-100 AS A MULTIPOINT PRINT SERVER



THE NETTERMINAL-200 AS A TWO-PORT TERMINAL SERVER

